



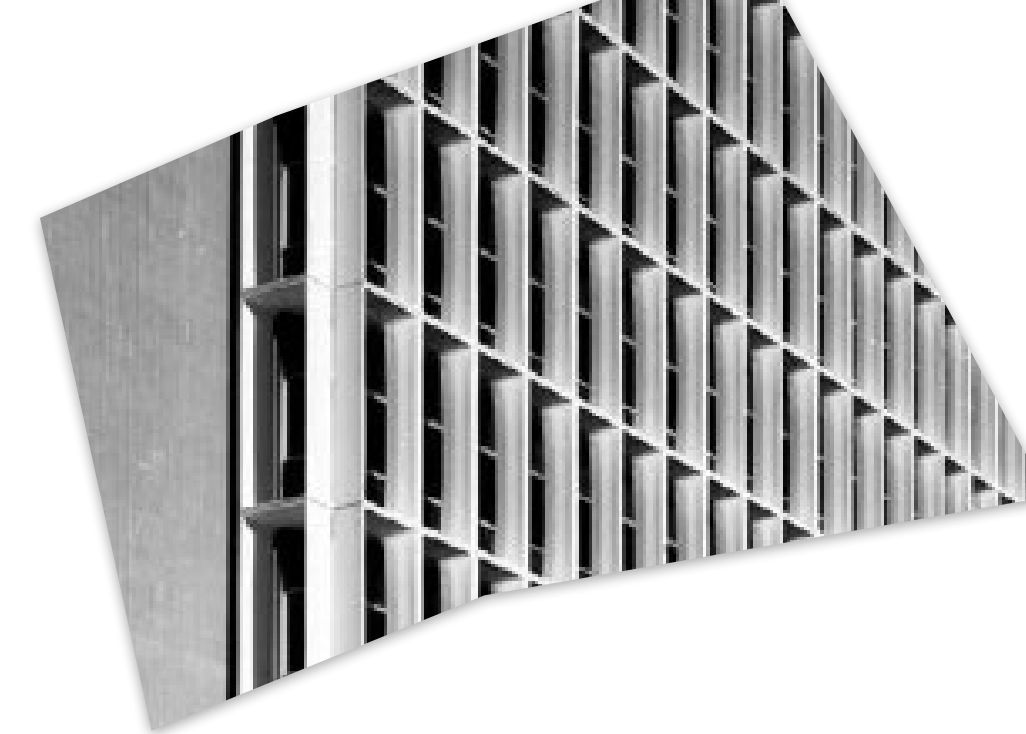
19th International Docomomo Conference

Student Workshop



Multiple Moderns: Climate, Community, Creativity

March 17–22, 2026 | Los Angeles



Advancing the International Docomomo Conference theme – **Multiple Moderns: Climate, Community, Creativity** – the Student Workshop takes place March 12–17, 2026, and is organized with the direct support of Docomomo International; Docomomo US; and the University of Southern California, School of Architecture.

About

Docomomo International Student Workshops offer a dynamic platform for students to engage with new experiences, ideas, and skills.

These workshops represent a key opportunity to explore and debate innovative educational strategies for the preservation of Modern cultural heritage, while embracing the underlying values and principles of the *Modern Movement*.

Rooted in Docomomo's core missions – D**O**ocumentation, C**O**nservation – the workshops address critical challenges in preserving modern cultural heritage through hands-on learning and reflective dialogue. They provide an inclusive space to interpret modern heritage in all its complexity, equipping participants with the tools to recognize its significance and maintain its authenticity.

The workshops promote collaborative discussion on how best to safeguard its intrinsic values and historical integrity within a broader cultural context.

Aligned with the educational aims set forth in the Docomomo Manifesto on Education, these workshops contribute meaningfully to the development of forward-looking strategies for the preservation of 20th-century cultural heritage.

Student Workshop Team

Over the course of five days, students will work closely with leading academic advisors and industry professionals

Workshop Committee Chairs

Andrea Canziani
Katie Horak
E. Sung Yi

Advisors

Daniela Arnaut
Wesel de Jonge
Todd Grover
Theodore Prudon
Wido Quist
Michele Racioppi
Liz Waytkus
E. Sung Yi

Professors and Tutors

TO BE ANNOUNCED

Student Workshop 2026 Schedule

MARCH 12 (THURSDAY)
Student Workshop orientation at the Neutra office

MARCH 13 (FRIDAY)
Workshop site visit – building documentation and assessment

MARCH 14 (SATURDAY)
Workshop at USC – work session focused on building analysis

MARCH 15 (SUNDAY)
Workshop at USC – work session focused on design proposals

MARCH 16 (MONDAY)
Workshop at USC – prep for final presentations

MARCH 17 (TUESDAY)
Student presentations at USC

Sun	Mon	Tues	Wed	Thurs	Fri	Sat
				MARCH 12 Student Workshop Orientation	MARCH 13 Student Workshop Site Visit	MARCH 14 Student Workshop (USC)
MARCH 15 Student Workshop (USC)	MARCH 16 Student Workshop (USC) Preconference Tours	MARCH 17 Student Workshop Presentations (USC) Preconference Tours Opening Plenary (Location TBD)	MARCH 18 IDC (USC)	MARCH 19 IDC (USC)	MARCH 20 IDC (USC) Closing Plenary and Reception (Getty Center)	MARCH 21 Post-Conference Tours
MARCH 22 Post-Conference Tours						



Venue and Expenses

The Student Workshop will be hosted at the University of Southern California (USC) School of Architecture in Watt Hall, just south of Downtown Los Angeles.

Registration

COMING SOON TO THE WEBSITE



Student Workshop 2026 Overview

HALL OF RECORDS, RICHARD NEUTRA AND ROBERT ALEXANDER, 1962; PHOTOGRAPH BY TAG CHRISTOF

Theme

The Student Workshop is aimed at providing comprehensive knowledge of all the processes connected with conservation: the ability to observe, analyze, and synthesize cultural values; theoretical and technical knowledge; as well as design abilities.

The Workshop addresses these issues, adapting the conference theme as follows:

Climate

Building Envelope Performance

Community

Housing and Public Space Connection

Creativity

Building Surface as Public Gallery and Education



Introduction: Richard Neutra

The integration of innovative technologies – from the standardization of industrial components to the domestication of electronics – stands as one of the defining pillars of the 20th century and the Modern Movement.

Few figures embodied this ethos as fully as Richard Neutra. From his revolutionary steel-framed Lovell Health House to his experimental VDL House and, ultimately, to the 1962 Los Angeles County Hall of Records, Neutra consistently championed, with overt optimism, the ideals of modernism.

He tirelessly advanced the application of industrial components, promoted the liberation of spatial organization, and embraced the promise of an automated lifestyle.

RICHARD NEUTRA ON THE ROOFTOP PENTHOUSE OF THE VDL RESEARCH HOUSE II IN LOS ANGELES, 1966. PHOTOGRAPH BY JULIUS SHULMAN.



Richard Neutra and the Workshop

This workshop enables students to understand how a disciplined adherence to core architectural principles and theories can define the career arc of a major Los Angeles architect.

Through a range of projects across scales and typologies, Richard Neutra's broad portfolio demonstrates the capacity and resilience of his language and methodology.

The Workshop celebrates and tests his legacy as societal and cultural needs emerge within the urban context.



Introduction: Hall of Records

The Los Angeles County Hall of Records, co-designed with Robert Alexander, is a remarkable and compact government institution designed to store and administer all paper records for the County. Its T-shaped plan expresses a clarity of organization, composed of a simple office bar intersecting a monolithic record-keeping volume at its midpoint. The resulting 17-story structure is wrapped in a didactic collage of building-performance skins and integrated wall sculptures.

To optimize daylight and enhance the work environment, the north elevation is defined by static louvers, while the south elevation is animated by 120-foot-tall operable aluminum louvers controlled by a pioneering sky sensor housed within a glass cupola atop the roof. Sculptural works by Joseph Young and Malcolm Leland complement these functional elements, concealing mechanical equipment and framing key public entry points.

HALL OF RECORDS, RICHARD NEUTRA AND ROBERT ALEXANDER, 1962; PHOTOGRAPH BY JULIUS SHULMAN. © J. PAUL GETTY TRUST. GETTY RESEARCH INSTITUTE, LOS ANGELES (2004.R.10).



The Project: Housing Conversion

The Student Workshop addresses the pressing housing shortage faced by the city of Los Angeles, with an estimated deficit of 240,000 beds.

In response, the City's Adaptive Reuse Ordinance has encouraged the conversion of existing building stock – 15 years and older – into public housing.

The Hall of Records offers a compelling opportunity to preserve and extend its legacy as a steward of technological and architectural innovation.

The vision is to transform the civic building into a 200-unit market-rate housing development while maintaining its historic significance.



Critical Queries

The following reflections aim to explore the delicate balance between preservation and transformation, functionality and meaning, proposing an approach that is both respectful and forward-thinking.

Starting from this premise, several key questions arise and will guide the inquiry:

Is such a transformation truly feasible, and at what cost – both materially and culturally?

What values are at stake in the adaptation of a building originally designed for a very different purpose?



Critical Queries

How far can we go in modifying a historic structure before its identity is compromised?

More broadly, how can the evolution of a building toward a new function remain compatible with its architectural and historical essence – and to what extent?

And finally, to what degree do the environmental and climatic design solutions originally conceived for a public building prove to be not only relevant but essential for housing today?

HALL OF RECORDS, RICHARD NEUTRA AND ROBERT ALEXANDER, 1962; PHOTOGRAPH BY JULIUS SHULMAN. © J. PAUL GETTY TRUST.
GETTY RESEARCH INSTITUTE, LOS ANGELES (2004.R.10).



Hall of Records Pictorial Documentation



HALL OF RECORDS, RICHARD NEUTRA AND ROBERT ALEXANDER, 1962; PHOTOGRAPH BY TAG CHRISTOPHER

Hall of Records

Year Built

1962

Project Architect

Richard Neutra and Robert Alexander with
Honold and Rex, Herman Charles Light
and James Friend

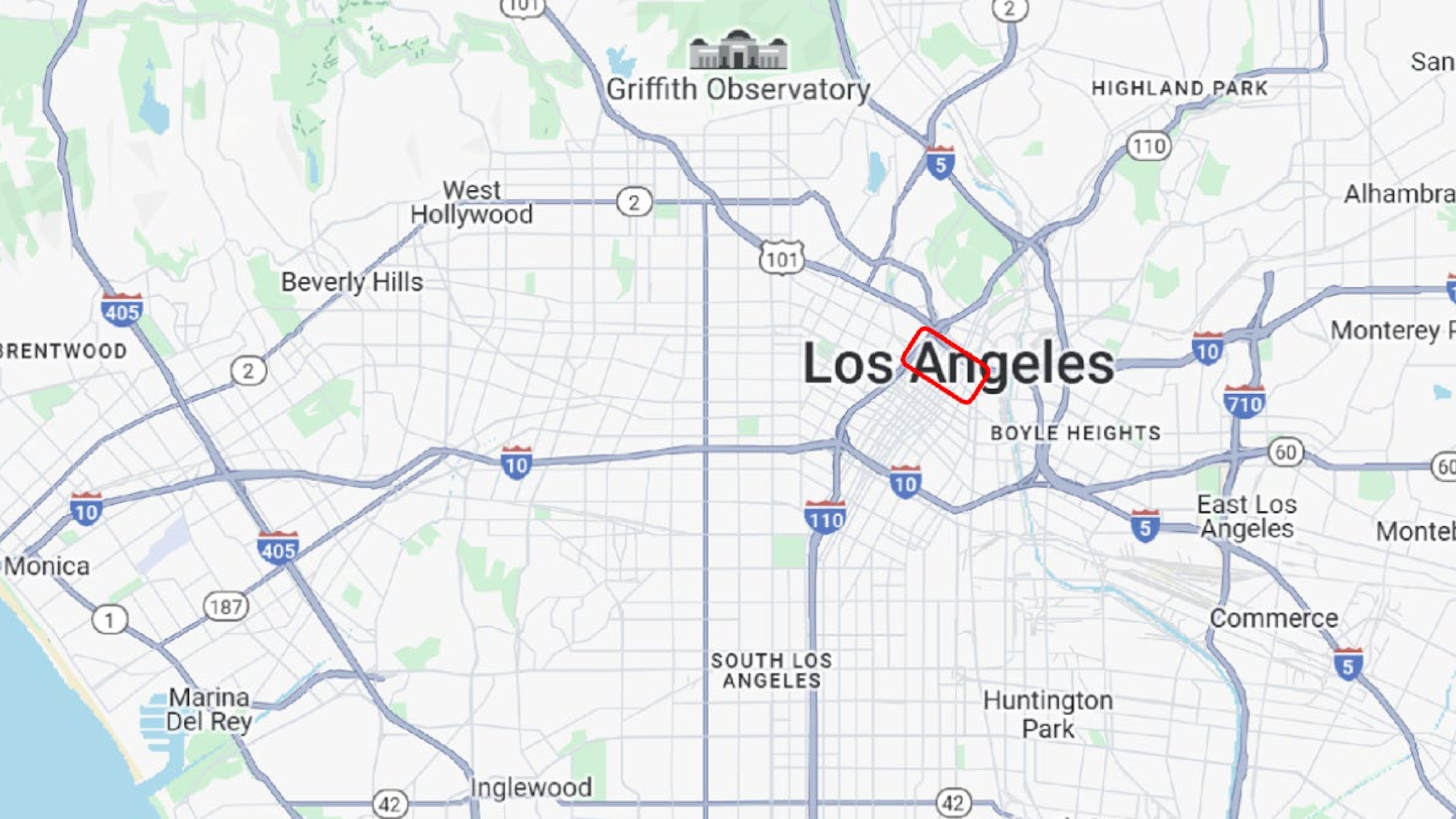
Client

County of Los Angeles

Location

320 West Temple Street
Los Angeles, CA





Griffith Observatory

HIGHLAND PARK

West Hollywood

Beverly Hills

Los Angeles

BOYLE HEIGHTS

East Los Angeles

Commerce

SOUTH LOS ANGELES

Huntington Park

Inglewood

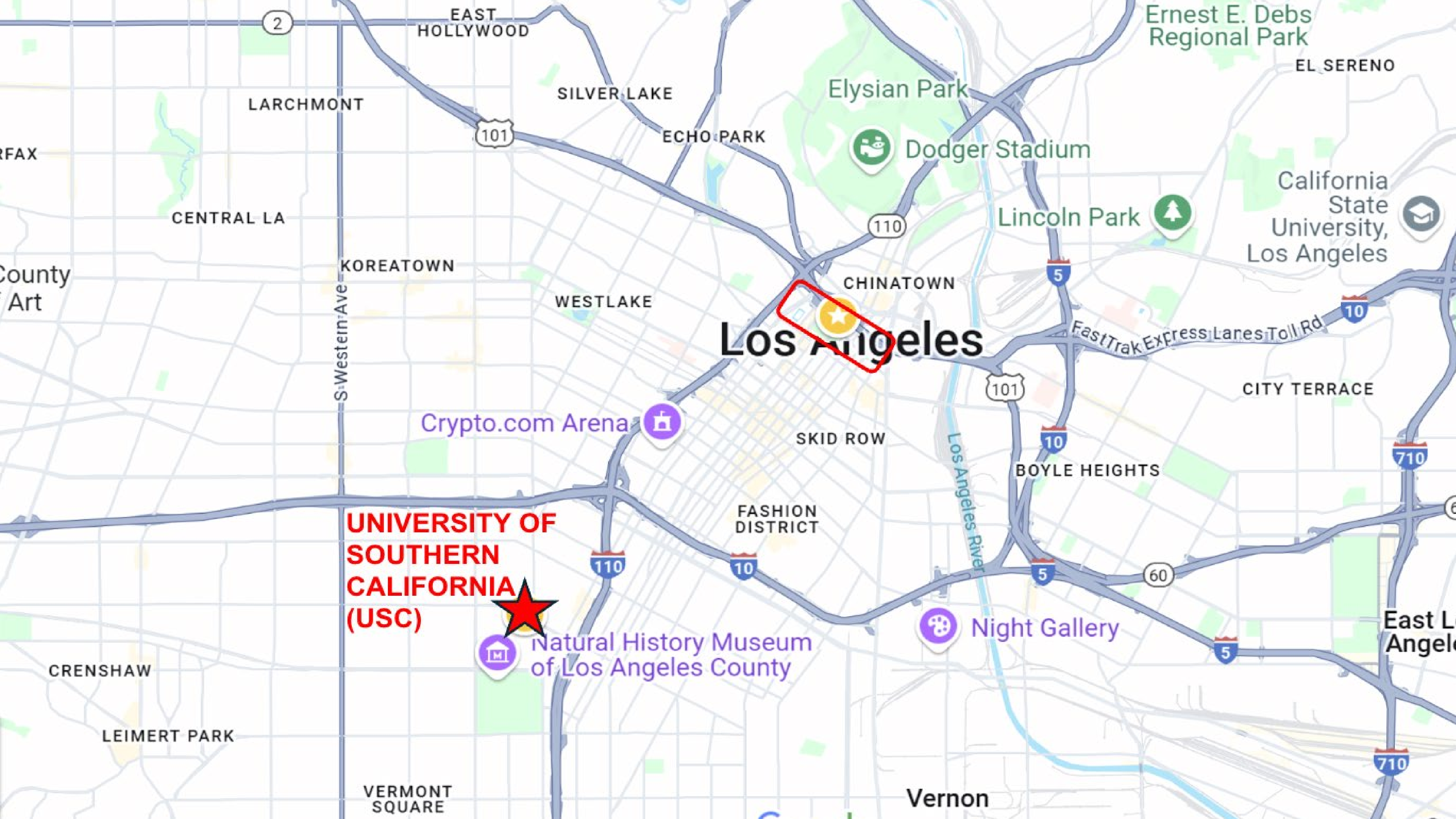
Monica

Marina Del Rey

Alhambra

Monterey Park

Montebello



Los Angeles

**UNIVERSITY OF
SOUTHERN
CALIFORNIA
(USC)**

Natural History Museum
of Los Angeles County

Night Gallery

Crypto.com Arena

SKID ROW

FASHION
DISTRICT

BOYLE HEIGHTS

CITY TERRACE

California
State
University,
Los Angeles

Lincoln Park

Dodger Stadium

Elysian Park

ECHO PARK

SILVER LAKE

LARCHMONT

CENTRAL LA

KOREATOWN

WESTLAKE

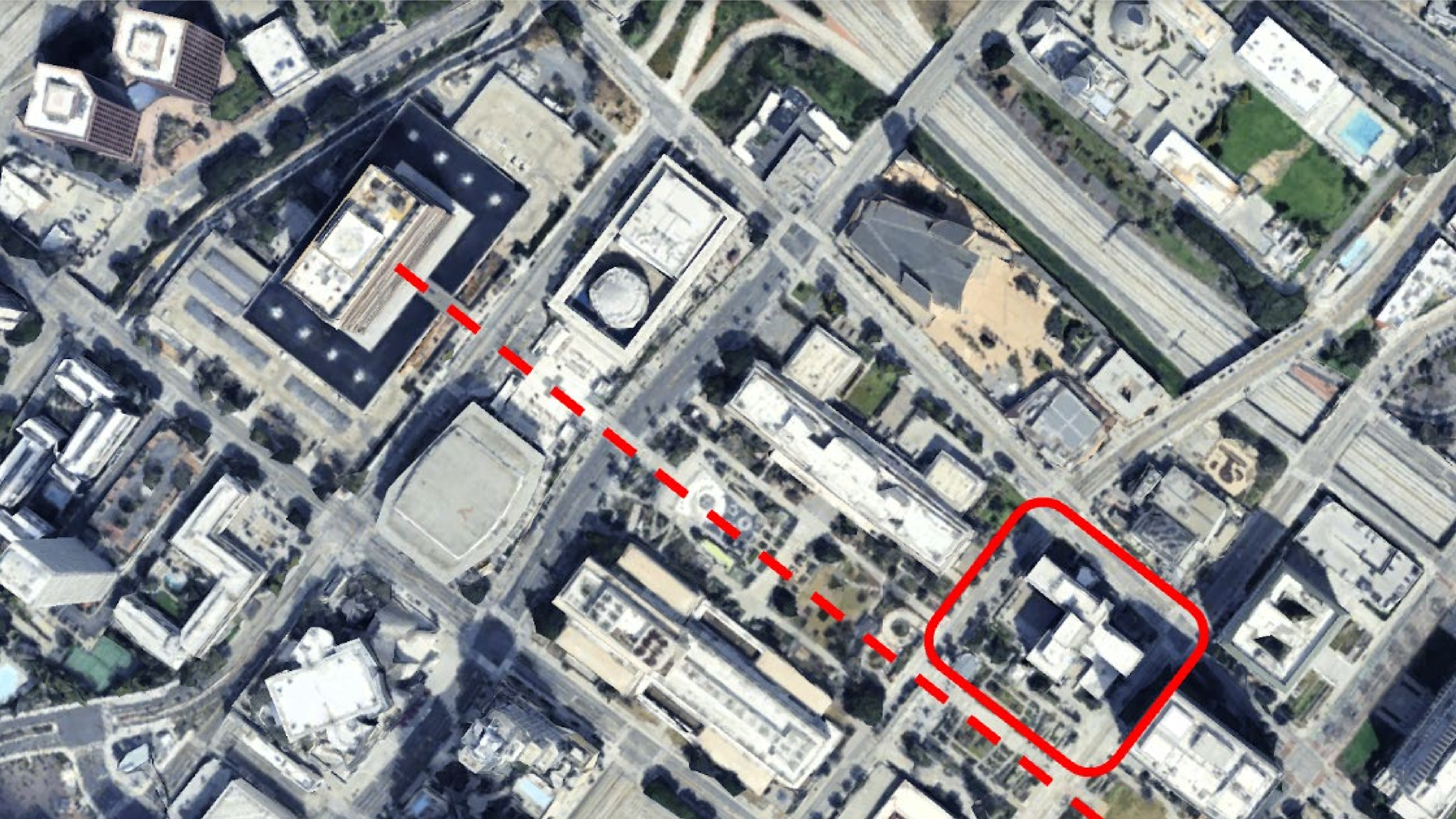
S Western Ave

VERMONT
SQUARE

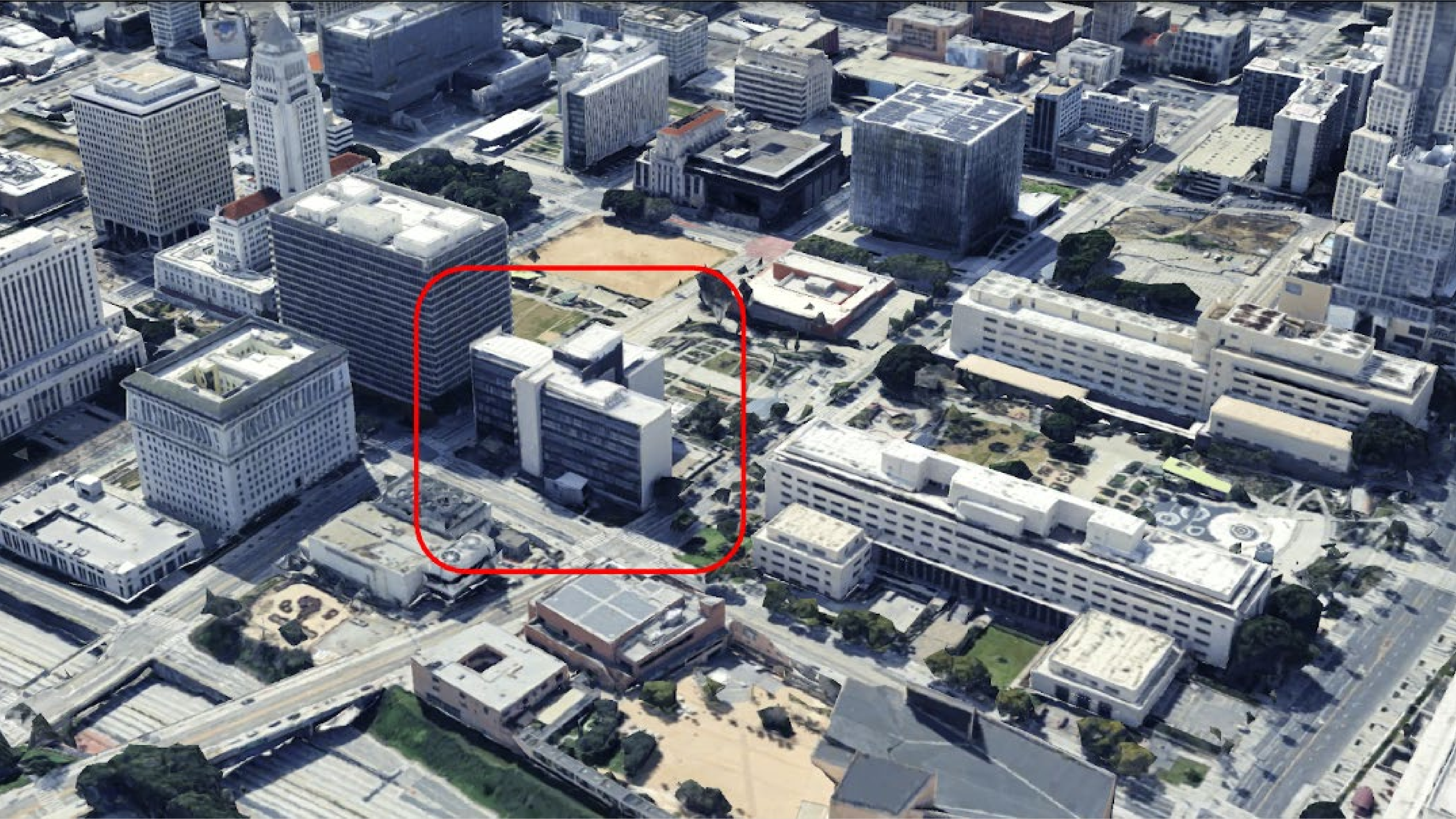
Vernon

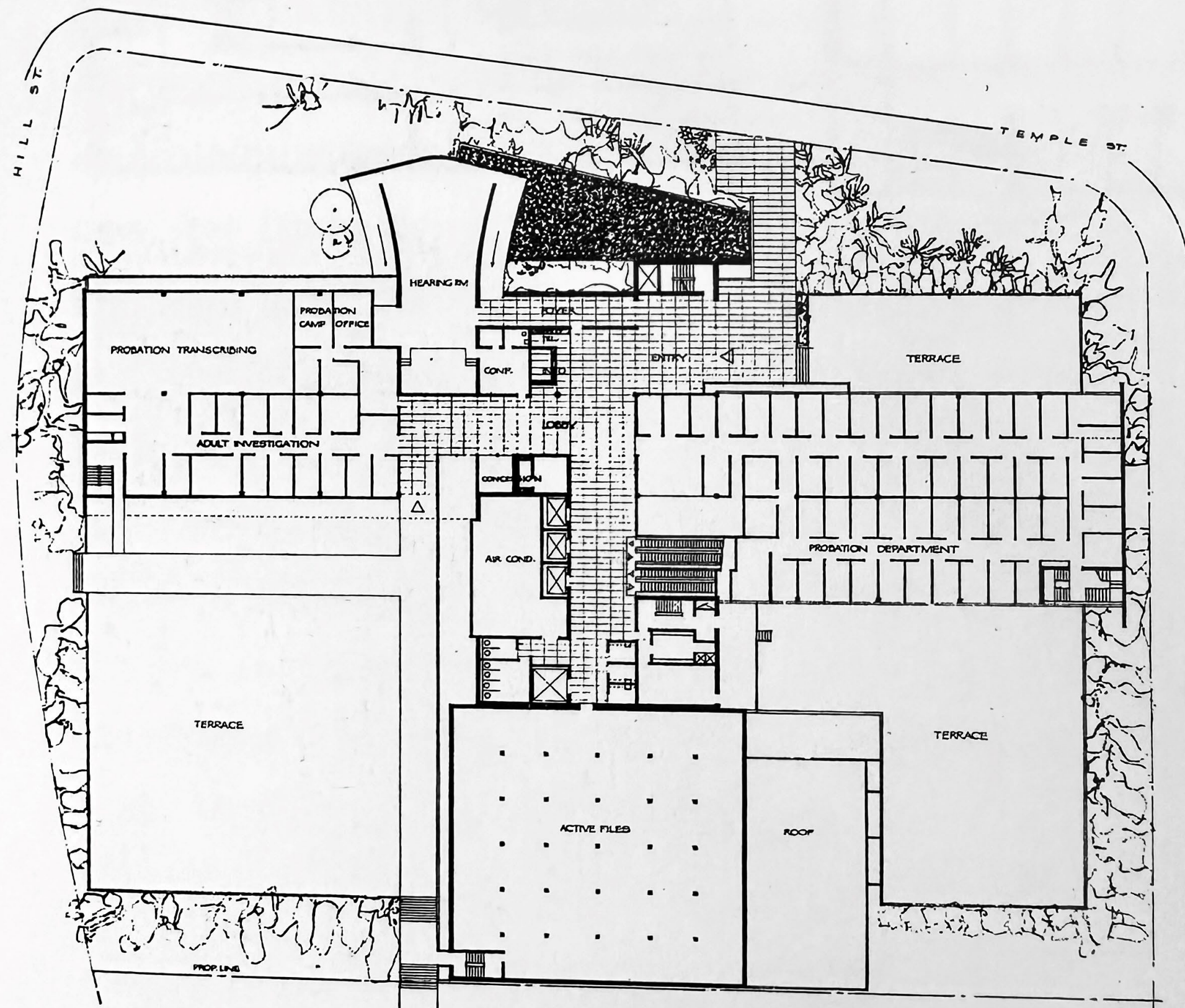
LEIMERT PARK

CRENSHAW









Ground Floor Plan



South Elevation

Showing the automated louvers and opaque record storage wing

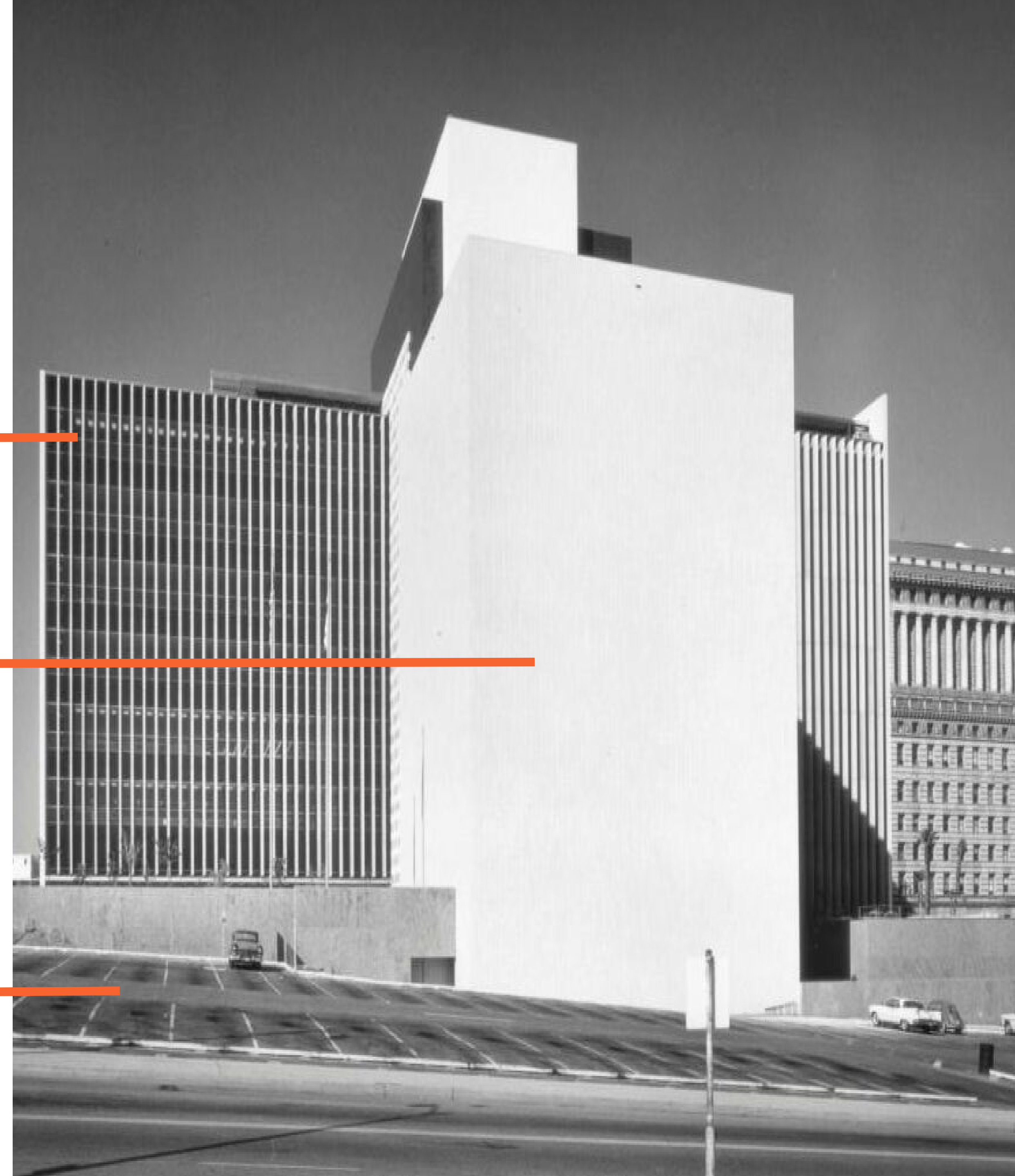
Hall of Records and Climate

Sustainability: Building Envelope Performance

120 ft (40m) tall operable louvers
for office workspace

Zero glazed / solid building
envelope for record storage

Note: the
Civic Park did
not exist



Hall of Records and Climate

Sustainability: Building Envelope Performance

North Elevation

Fixed Vertical Louvers for East and West sun while view remains unobstructed

Ambient northern daylight promotes workplace quality and reduces electricity



Hall of Records and Community

Housing and Public Space Connection – challenges
and main tasks

New function, new use,
new living expectations

Housing

Connection to
new Civic Park



Hall of Records and Creativity

Building Surface as Didactic Public Art

New layers (contemporary art), new
implications in building evolution

Different geologies
of LA County

Pacific Ocean

TOPOGRAPHICAL MAP, JOSEPH YOUNG, 1962. LOS ANGELES COUNTY ARTS COMMISSION COLLECTION, LOS ANGELES
COUNTY ARTS COMMISSION CIVIC ART COLLECTION.



About Docomomo

Docomomo International is a non-profit organization dedicated to documentation and conservation of buildings, sites and neighborhoods of the Modern Movement. It was initiated in 1988 by Hubert-Jan Henket, architect and professor, and Wessel de Jonge, architect and research fellow, at the School of Architecture at the Technical University in Eindhoven, the Netherlands. Since its creation, Docomomo International has experienced a rapid growth, establishing itself as a major player not only in the realm of conservation but also in the broader field of architectural culture. Docomomo Chapters operate in 80 countries and organize as national and/or regional entities to suit local requirements. Docomomo International is the sum total of all these national and/or regional activities.

do.co.mo.mo_US[®]

Founded in 1995, Docomomo US is the United States working party of Docomomo International. Headquartered in New York City and led by a national board of directors and three full-time staff, Docomomo US represents a union of twenty-one regional chapters and five partner organizations that share its members' knowledge of and enthusiasm for modern architecture and design. Its membership (now in the thousands) consists of a diverse array of architects, preservation professionals, academics, realtors, homeowners, students, and modern enthusiasts. Docomomo US reaches more than 6,000 individuals through its curated monthly newsletter, which includes original articles and important modern news and events, and through its active social media accounts, events, and chapter activities.

About the International Docomomo Conference

The International Docomomo Conference (IDC) is a biennial event that began in Eindhoven, the Netherlands in 1990. It brings together members and colleagues from around the world for an in-depth exploration of global issues and new ideas about the future built environment as it relates to the Modern Movement.

Program Audience

Conference attendees include thought leaders, practitioners, professionals, and academics from the US and around the world.



ARCHITECTS
LANDSCAPE ARCHITECTS
INTERIOR DESIGNERS
ENGINEERS AND DESIGNERS
URBAN PLANNERS
PRESERVATION ADVOCATES
HISTORIANS AND ARCHIVISTS
MODERNIST HOMEOWNERS
REALTORS AND DEVELOPERS
EDUCATORS AND STUDENTS
ARCHITECTURAL HISTORIANS
COMMUNITY ORGANIZERS
CONSERVATORS