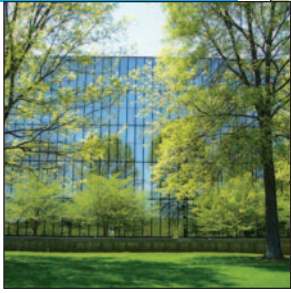


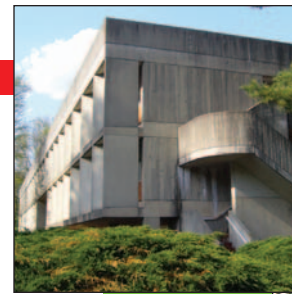
Bell Labs/Saarinen



IAS/Harrison



Trenton Bath House/Kahn



IAS/GBQC

IAS/GBQC



Highlights of Modern Architecture in the Garden State

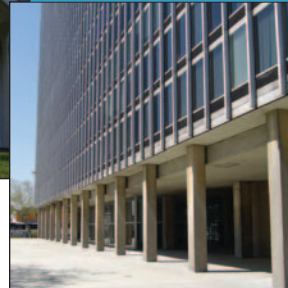
PA Tech/Rogers



Princeton/Yamasaki



Colonnade/Mies van der Rohe



PLUS:

Princeton/I.M. Pei

IAS/Zion

Princeton/Larrabee Barnes

IAS/Breuer

Princeton/Gwathmey Siegel

do.comomo_US
New York/Tri-State

SATURDAY JUNE 9

The first stop on DOCOMOMO US New York/Tri-State's full-day bus tour will be Eero Saarinen's Bell Labs research center (1957–1962) in Holmdel. This is a rare opportunity to see the interior of the complex before it is altered. Lucent archivist Ed Eckert will lead the group.

Next up, the Jewish Community Center (1954–1959) in Ewing, aka the Trenton Bath House and Day Camp, designed by Louis Kahn. This early work of Kahn, displaying his signature elemental geometries, was recently saved through the efforts of dedicated preservationists. Donna Lewis, Director of the Mercer County Planning Division, will be our guide.

The Institute for Advanced Study (IAS) in Princeton includes little known yet fine Modern architecture. The Library (1962–1965) was designed by Wallace K. Harrison. The Dining Hall and West Building (1968–1971) by Geddes, Brecher, Qualls, Cunningham show the strong influence of late Le Corbusier. Their birch grove courtyard was designed by Robert Zion. Though the Members Housing (1954–1957) has been altered, the hand of Marcel Breuer is still evident. Architect Robert Geddes will present the IAS buildings to the group.

Moving to Princeton University, we will see highlights of Modern era architecture on campus: Whig Hall (1972 renovation) by Gwathmey Siegel & Associates; Spelman Halls (1974), a dormitory complex designed by I.M. Pei & Partners; Robertson Hall (1965) by Minoru Yamasaki; and the New South Building (1965) by Edward Larrabee Barnes.

Final stops include PA Technologies (1981), the only building in the United States designed by Richard Rogers, the 2007 recipient of the Pritzker Prize; and the Colonnade & Pavilion Apartments (1959–1960) in Newark designed by Ludwig Mies van der Rohe for Herbert Greenwald.

Cost (including box lunch and snacks): \$75 members /\$90 non-members. Departure is 8:30am from Midtown (8th Ave at 42nd/43rd); returning to same approximately 7:30pm.

Payment in advance required by June 4th. Please mail checks payable to DOCOMOMO US NY/Tri-State to: P.O. Box 250532, New York, NY 10025. Include names, email addresses and mobile phone numbers for each attendee. Inquiries can be sent to nytri@docomomo-us.org

*This tour is part of DOCOMOMO US 2007 National Tour Day
For more on Tour Day and the NJ tour itinerary visit: www.docomomo-us.org*

The final itinerary will largely adhere to the description above but could be somewhat modified. Photos: John Arbuckle